

Tri Auto ZX2 Quick Guide

Before Use and Maintenance

- * Be sure to read the accompanying Instructions for Use before using the Tri Auto ZX2.
- * Always wear appropriate gloves when you perform maintenance.



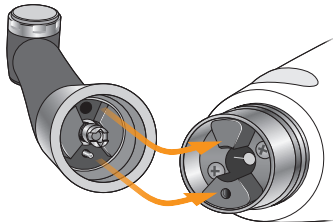
For more information, scan the QR code to the right.



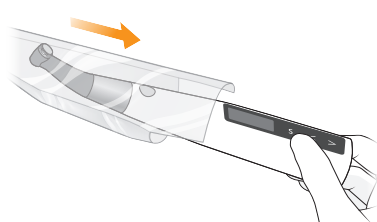
Before Use

Component Assembly

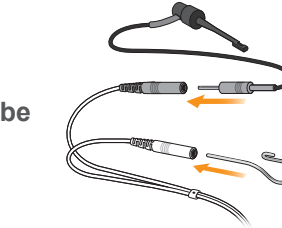
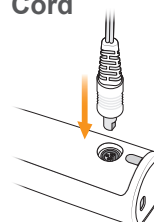
Step 1
Connect Contra Angle



Step 2
Put on HP Protective Sleeve

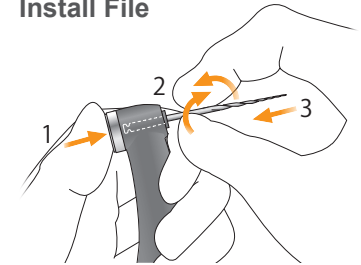


Step 3
Connect Probe Cord



CAUTION
Be sure to connect the contrary electrode (hook) to the white probe connector.

Step 4
Install File



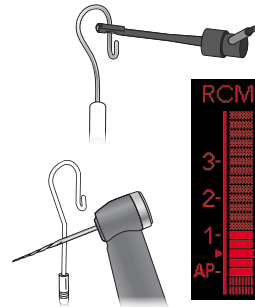
Function Check

Step 1
Canal Measurement Function

Turn the power on. The LCD display shows the "m1" screen. Touch the contrary electrode (hook) with the file and the clip on the end of the file holder; make sure that all the indicator bars on the meter in the LCD display light up.

WARNING

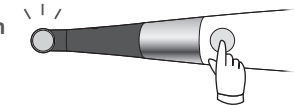
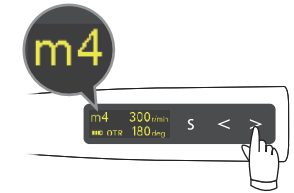
If all the indicator bars do not light up, stop using the instrument immediately and have it professionally repaired.



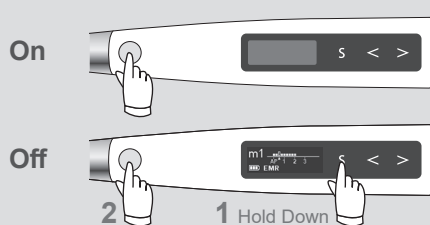
Step 2
Motor Rotation

Select "m4" (OTR mode). Run the motor to see if it rotates smoothly.

- If the motor alternates between forward and reverse rotation: Calibrate the instrument.
- If the instrument makes an abnormal vibration or noise: Stop using the instrument immediately and have it professionally repaired.



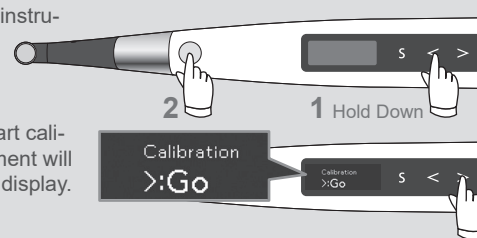
Turning the Power On/Off



Calibration (Before first use after purchase, after replacing the contra angle, if OTR action is triggered erratically or at random, etc.)

Connect the contra angle. With the instrument turned off, hold down the Left-Set switch (<) and then press the Main switch.

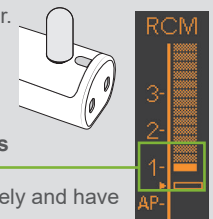
Press the Right-Set switch (>) to start calibration. After calibration, the instrument will automatically return to the Standby display.



Checking with Tester (once a week)

Turn the power on. Connect the tester. Check the meter reading.

- If the meter lights up to within two bars of bar number 1: Normal
- If the meter lights up to three bars more or less than bar number 1: Stop using the instrument immediately and have it professionally repaired.



Maintenance – after each treatment



After Use

Step 1
Turn Power Off

2
1 Hold Down

Step 2
Take Out File

1 2

Step 3
Remove HP Protective Sleeve

WARNING
Never reuse the HP protective sleeve.

Step 4
Charge Battery

Sterilization

Sterilize the following:

- a. File Holder
- b. Contrary Electrode
- c. Contra Angle
- d. Handpiece Holder*
- e. External File Electrode (with cap)*

Step 1
Cleaning

Step 2
Disinfection

Step 3
Lubrication (only for the contra angle)

Lubricate the contra angle with the LS OIL. Wipe any excess oil off of the contra angle.

Put 5 drops of the LS OIL here and wait for 10 minutes.

1 Drop 1 Drop

Step 4
Packing

Step 5
Sterilization

Recommendation:

Sterilizer type	Temperature	Time (minutes)	Drying time after sterilization (minutes)	Country
Gravity	+132°C (+269.6°F)	15	15	U.S.A.
Gravity	+121°C (+249.8°F)	30	15	
Gravity	+134°C (+273.2°F)	min. 6	min. 10	Other countries
Gravity	+121°C (+249.8°F)	min. 60	min. 10	
Dynamic Air Removal	+134°C (+273.2°F)	3	10	

Operating Conditions for High-Temperature Washer-Disinfectors

Unit Name	Mode	Detergent (concentration)	Neutralizer (concentration)
Miele G7881	Vario TD	neodisher MediClean (0.3% to 0.5%)	neodisher Z (0.02% to 0.04%)

Disinfection

Disinfect the following with ethanol (70 vol% to 80 vol%):

- f. Motor Handpiece
- g. Probe Cord
- h. Battery Charger
- i. AC Adapter
- j. Tester

Step 1
Disinfection

a, b, c, d*, e*, f, g, h, i, j

* Option (sold separately)

