

Tri Auto ZX2 Quick Guide

Before Use and Reprocessing

- * Be sure to read the accompanying Instructions for Use before using the Tri Auto ZX2.
- * Always wear appropriate gloves when you perform reprocessing.



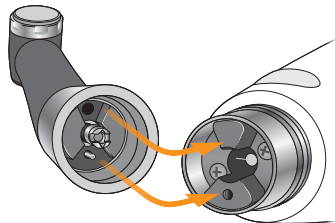
For more information, scan the QR code to the right.



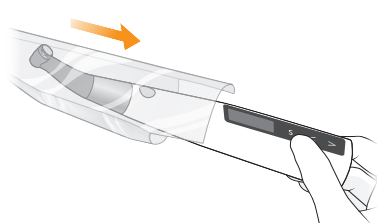
Before Use

Component Assembly

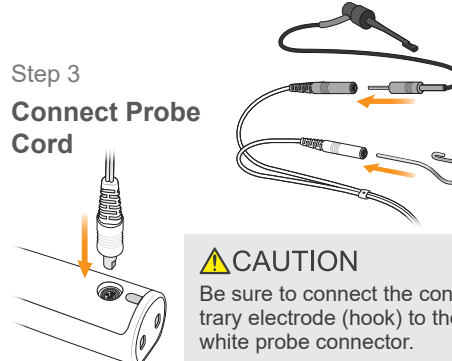
Step 1
Connect Contra Angle



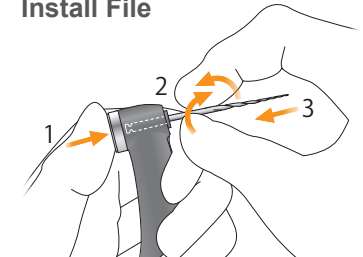
Step 2
Put on HP Protective Sleeve



Step 3
Connect Probe Cord



Step 4
Install File



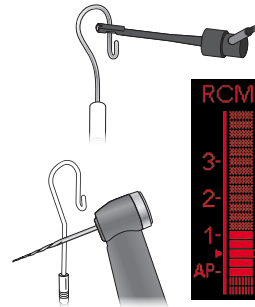
Function Check

Step 1
Apex location Function

Turn the power on. The LCD display shows the "m1" screen. Touch the contrary electrode (hook) with the file and the clip on the end of the file holder; make sure that all the indicator bars on the meter in the LCD display light up.

WARNING

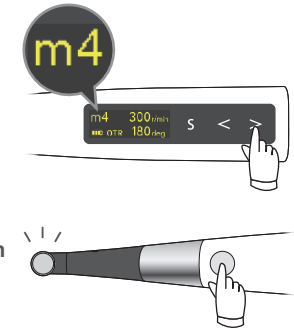
If all the indicator bars do not light up, stop using the instrument immediately and have it professionally repaired.



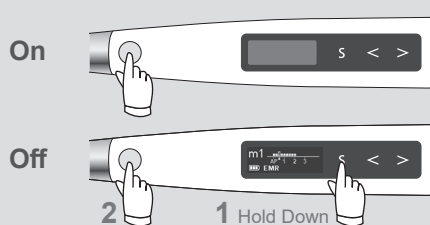
Step 2
Motor Rotation

Select "m4" (OTR mode). Run the motor to see if it rotates smoothly.

- If the motor alternates between forward and reverse rotation: Calibrate the instrument.
- If the instrument makes an abnormal vibration or noise: Stop using the instrument immediately and have it professionally repaired.



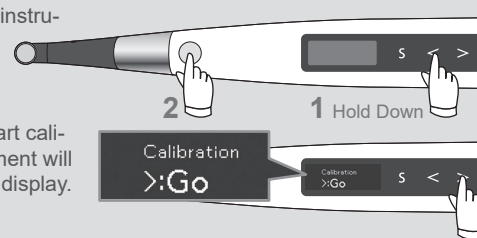
Turning the Power On/Off



Calibration (Before first use after purchase, after replacing the contra angle, if OTR action is triggered erratically or at random, etc.)

Connect the contra angle. With the instrument turned off, hold down the Left-Set switch (<) and then press the Main switch.

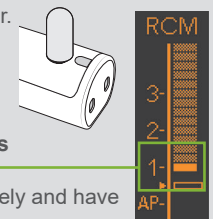
Press the Right-Set switch (>) to start calibration. After calibration, the instrument will automatically return to the Standby display.



Checking with Tester (once a week)

Turn the power on. Connect the tester. Check the meter reading.

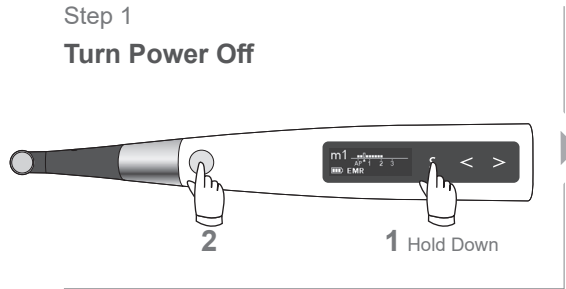
- If the meter lights up to within two bars of bar number 1: Normal
- If the meter lights up to three bars more or less than bar number 1: Stop using the instrument immediately and have it professionally repaired.



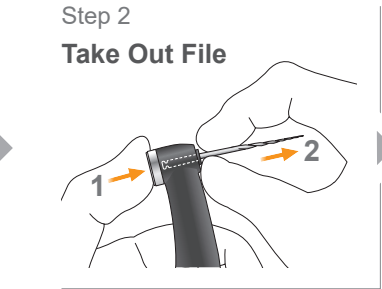
Reprocessing – after each treatment

After Use

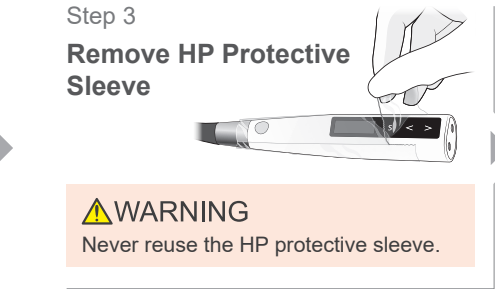
Step 1 Turn Power Off



Step 2 Take Out File

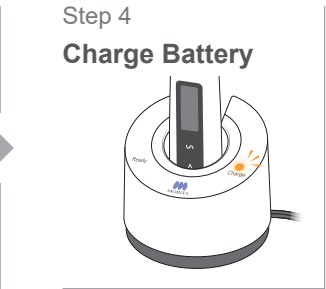


Step 3 Remove HP Protective Sleeve



WARNING
Never reuse the HP protective sleeve.

Step 4 Charge Battery

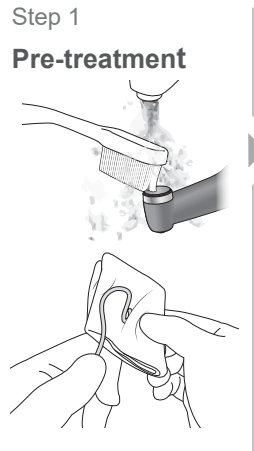


Sterilization

Parts to be Sterilized

- a. File Holder
- b. Contrary Electrode
- c. Contra Angle
- d. Handpiece Holder*
- e. External File Electrode (with cap)*

Step 1 Pre-treatment



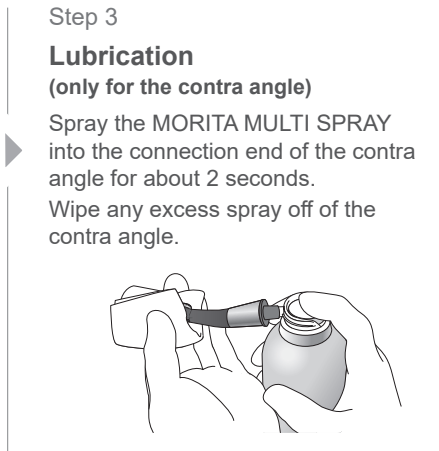
Step 2 Cleaning & Disinfection

Operating Conditions for High-Temperature Washer-Disinfectors


Unit Name	Miele G7881
Mode	Vario TD
Detergent (concentration)	neodisher MediClean (0.3% to 0.5%)
Rinse (concentration)	neodisher MediKlar (0.02% to 0.04%)

Step 3 Lubrication (only for the contra angle)

Spray the MORITA MULTI SPRAY into the connection end of the contra angle for about 2 seconds. Wipe any excess spray off of the contra angle.



Step 4 Packing



Step 5 Sterilization Recommendation:
Country: U.S.A.

Sterilizer type	Temperature	Time (minutes)	Drying time after sterilization (minutes)
Gravity	+132 °C (+269.6 °F)	15	15
	+121 °C (+249.8 °F)	30	

Country: Other than U.S.A.

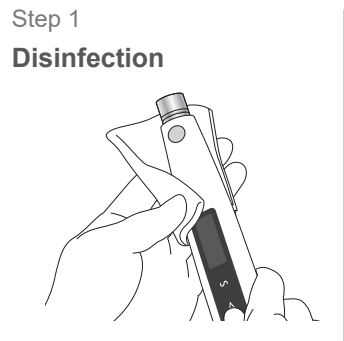
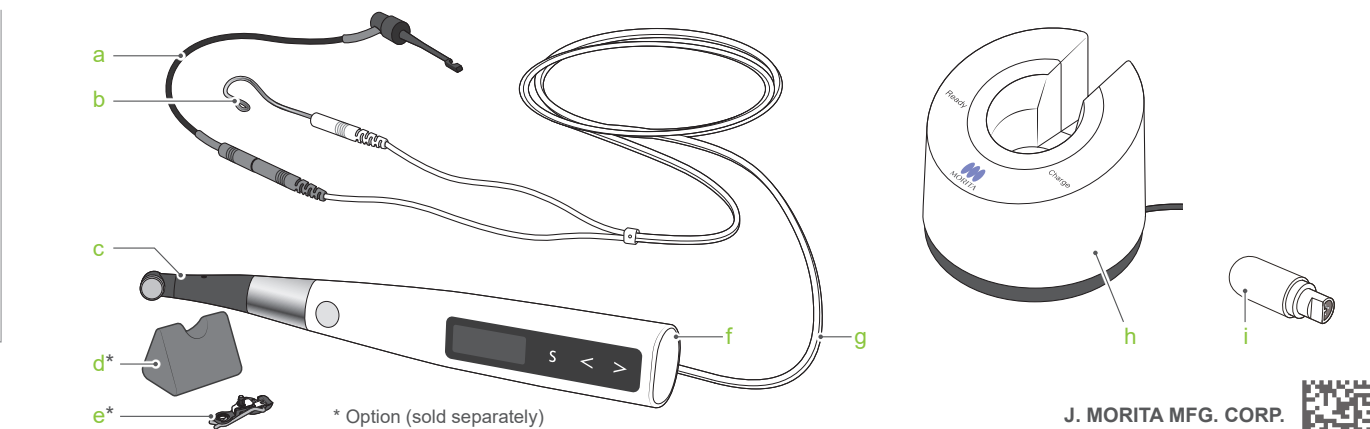
Dynamic Air Removal	+134 °C (+273.2 °F)	3	10
		5	
Gravity	+134 °C (+273.2 °F)	min. 6	min. 10
	+121 °C (+249.8 °F)	min. 60	

Disinfection

Parts to be Disinfected

- f. Motor Handpiece
- g. Probe Cord
- h. Battery Charger
- i. Tester

Step 1 Disinfection

* Option (sold separately)

